

Albany Forest Drive and Jagora Drive, Albany Creek Installation of Traffic Signals and Intersection Upgrade

The intersection of Albany Forest Drive and Jagora Drive is to be upgraded to provide a significant safety improvement for drivers and pedestrians associated with the Albany Creek State High School and to provide capacity for current traffic demands and additional traffic growth. This project is estimated to cost \$1.35 Million and was initiated through community requests for improved pedestrian safety and also for improvements to the flow of vehicles through this intersection, especially during peak traffic periods. A concept of the signalised intersection design is included with this fact sheet.

This upgrade will include the installation of:

- New traffic signals at the intersection of Albany Forest Drive and Jagora Drive;
- Signalised pedestrian crossings at the new signalised intersection (includes replacement of existing children's crossing);
- Additional right turn lane on Albany Forest Drive at Old Northern Road;
- Improved school access;
- Renewal or replacement of kerb and road surfacing;
- New off-street parking bays on the southern side of Albany Forest Drive;
- Pathway improvements;
- Bicycle facilities improvements; and
- Relocation of utility services (lighting).

Through these works MBRC aims to:

- Improve safety for all transport users.
- Increase the intersection capacity and reduce delays for motorists.
- Ensure continued efficient intersection operation for road users into the future.
- Improve access for all transport users, including cyclists and pedestrians.

Approximate Project timeline

Design Development	Completed July 2017
Planned Road Construction	2017/18 School holidays (specific timing to be confirmed)

During the construction period it will be necessary to provide for diversions, detours, partial lane closures and some reduction in lane widths to allow the construction of the intersection to be undertaken in a safe and efficient manner. Some night construction activities may be undertaken to minimise impacts on day traffic. Patience and caution by drivers will be appreciated whilst the works are underway. Temporary signage and Variable Message Boards (VMS) will be in place as well as traffic controllers.

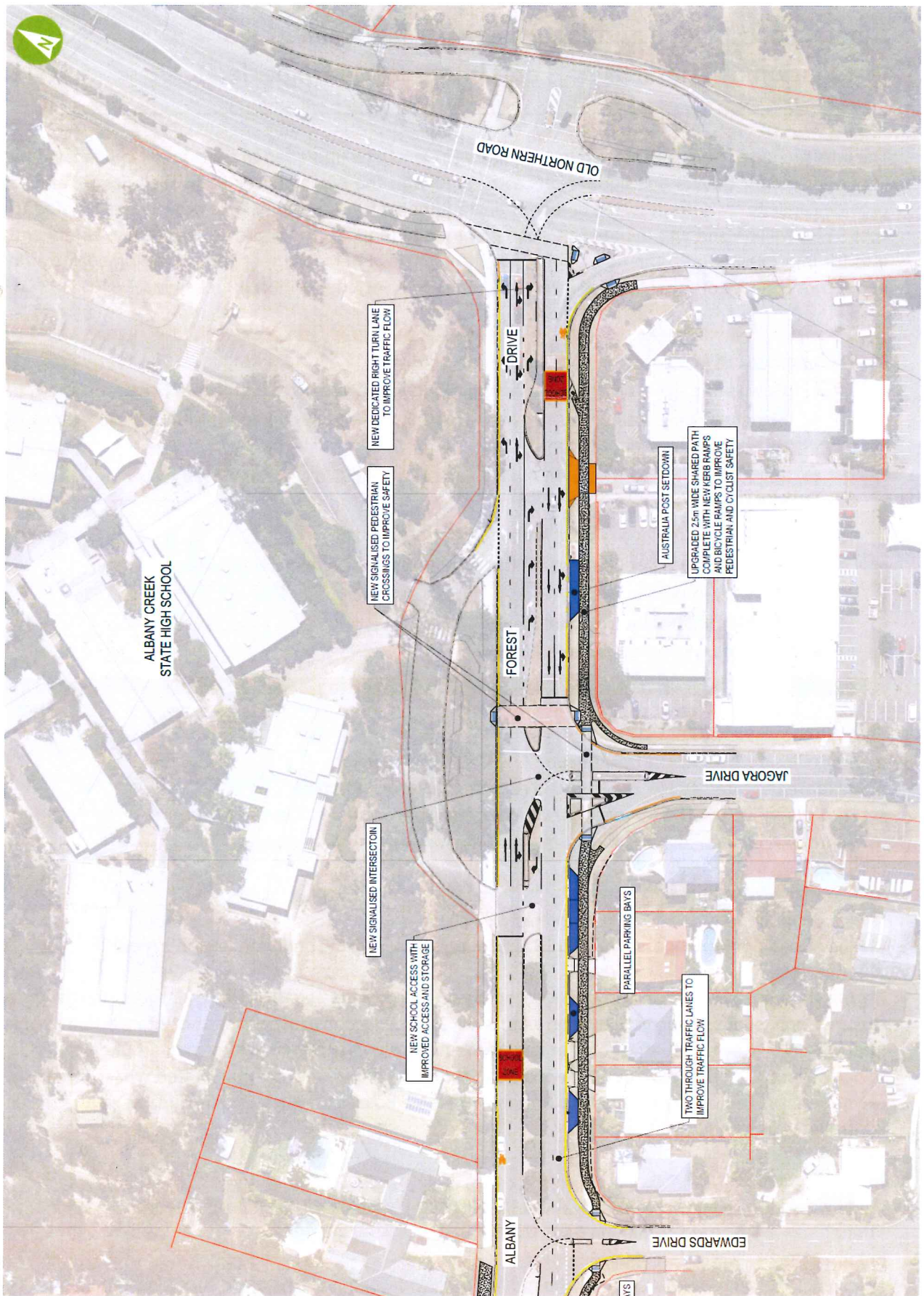
More information

If you would like to speak to Council about the project, please contact the project team:

Phone: Richard McRae on 3205 0555

Email: ECM.ITPD@moretonbay.qld.gov.au

Display: A project display will be held at the Woolworths Marketplace shopping centre on 11 October 2017 from 3:00pm to 7:00pm. Divisional Councillors and project staff will be on hand to provide information and discussion.



Map shows concept design for the signalised intersection